

CtBP1 (phospho Ser422) Polyclonal Antibody
Catalog # AP67747**Specification**

CtBP1 (phospho Ser422) Polyclonal Antibody - Product Information

Application	WB, IHC-P
Primary Accession	Q13363
Reactivity	Human, Mouse, Rat
Host	Rabbit
Clonality	Polyclonal

CtBP1 (phospho Ser422) Polyclonal Antibody - Additional Information**Gene ID** 1487**Other Names**

CTBP1; CTBP; C-terminal-binding protein 1; CtBP1

Dilution

WB~~Western Blot: 1/500 - 1/2000. Immunohistochemistry: 1/100 - 1/300. ELISA: 1/10000. Not yet tested in other applications.

IHC-P~~N/A

Format

Liquid in PBS containing 50% glycerol, 0.5% BSA and 0.09% (W/V) sodium azide.

Storage Conditions

-20°C

CtBP1 (phospho Ser422) Polyclonal Antibody - Protein Information**Name** CTBP1**Synonyms** CTBP**Function**

Corepressor targeting diverse transcription regulators such as GLIS2 or BCL6. Has dehydrogenase activity. Involved in controlling the equilibrium between tubular and stacked structures in the Golgi complex. Functions in brown adipose tissue (BAT) differentiation.

Cellular Location

Cytoplasm. Nucleus

Tissue Location

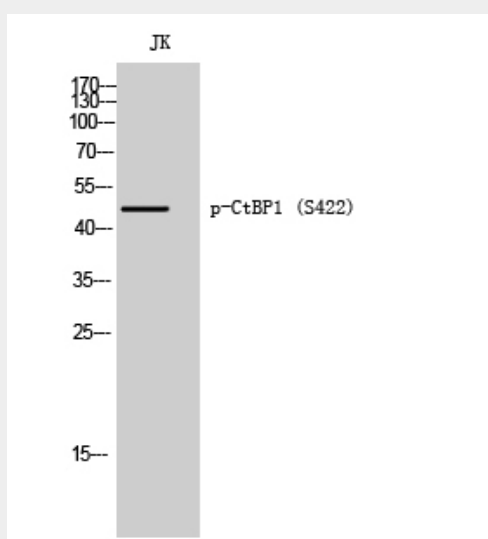
Expressed in germinal center B-cells.

CtBP1 (phospho Ser422) Polyclonal Antibody - Protocols

Provided below are standard protocols that you may find useful for product applications.

- [Western Blot](#)
- [Blocking Peptides](#)
- [Dot Blot](#)
- [Immunohistochemistry](#)
- [Immunofluorescence](#)
- [Immunoprecipitation](#)
- [Flow Cytometry](#)
- [Cell Culture](#)

CtBP1 (phospho Ser422) Polyclonal Antibody - Images



Western Blot analysis of JK cells using Phospho-CtBP1 (S422) Polyclonal Antibody

CtBP1 (phospho Ser422) Polyclonal Antibody - Background

Corepressor targeting diverse transcription regulators such as GLIS2 or BCL6. Has dehydrogenase activity. Involved in controlling the equilibrium between tubular and stacked structures in the Golgi complex. Functions in brown adipose tissue (BAT) differentiation.